

# FUTURE FREMANTLE PROJECT

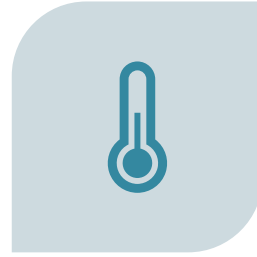
Nicole Lockwood



WILL WE STILL DRIVE  
CARS?



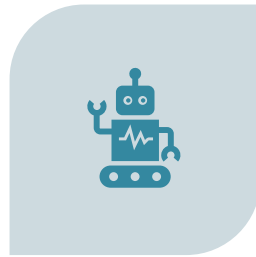
WHAT DOES A  
COVID-RESILIENT CITY  
LOOK LIKE?



HOW DO WE LIVE  
WITH COVID AND  
OTHER PANDEMIC?



WILL MOST PEOPLE  
WORK FROM HOME?



WHAT'S THE ROLE OF  
ROBOTS?



HOW DO WE DESIGN  
FOR MORE EXTREME  
WEATHER?

HOW WILL  
WE LIVE IN  
2050?



# AREAS OF FOCUS



## **JOBS**

HOW WILL PEOPLE  
MAKE MONEY?



## **CONNECTIONS**

HOW WILL PEOPLE  
MOVE AROUND AND  
CONNECT WITH OTHER  
PLACES?



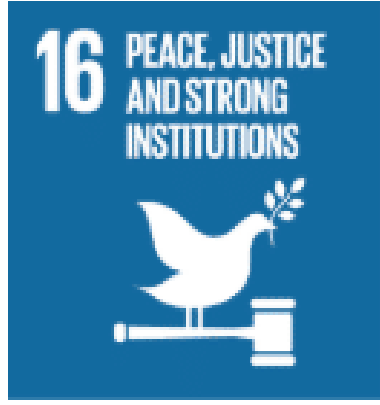
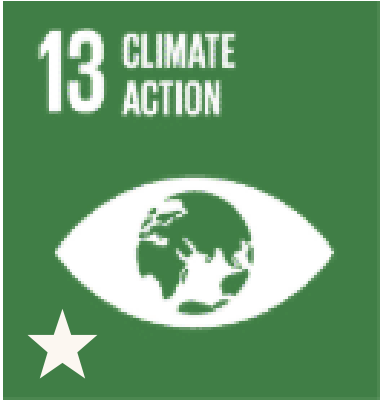
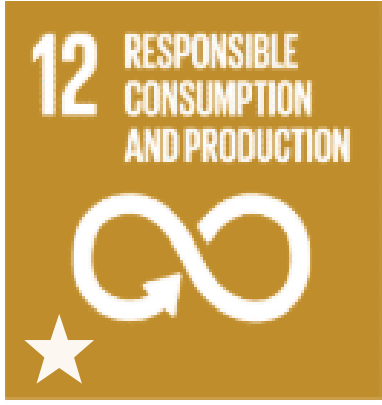
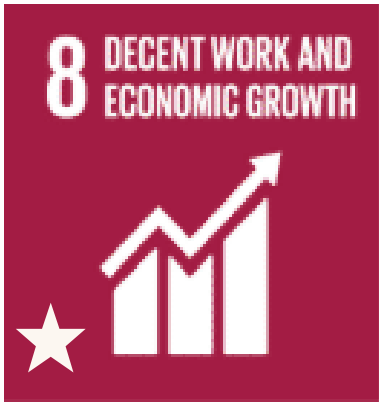
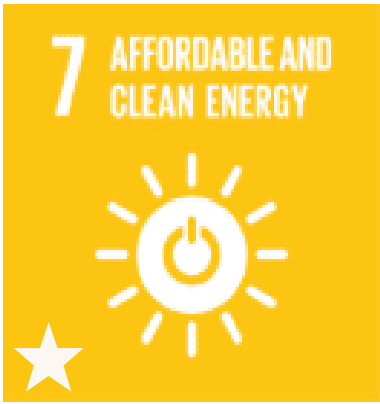
## **DESIGN**

WHAT WILL THE CITY  
LOOK LIKE?



## **SUSTAINABILITY**

HOW WILL WE  
PROTECT AND  
ENHANCE THE  
ENVIRONMENT?





Hamburg Port, Germany



Toronto Waterfront, Canada

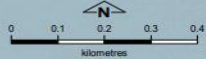
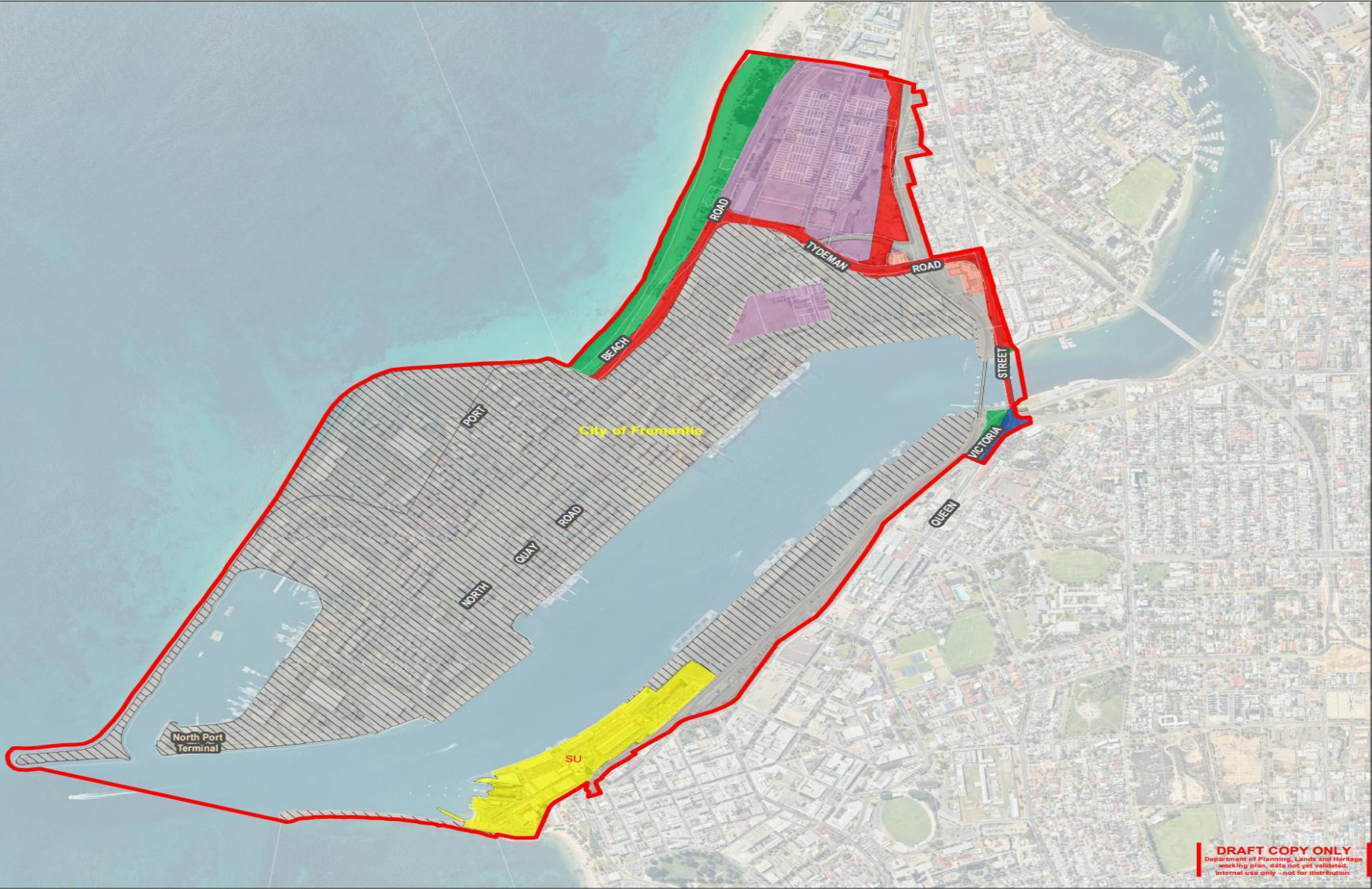


Hunter's Point, New York, USA



Tianjin Port, China

- Legend**
- Existing Region Scheme Reserves**
- Central city area
  - Industrial
  - Other regional roads
  - Parks and recreation
  - Port installations
  - Primary regional roads
  - Public purposes - special uses SU
  - Railways
  - Urban
  - Waterways



Produced by Data Analytics,  
Department of Planning, Lands and Heritage,  
Copyright © June 2021

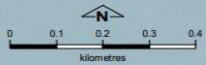
Idopglfiesv02\Products\Perth  
FutureOfFremantle  
FutureOfFremantle\_MRS\_A3L.mxd

Base information supplied by  
Western Australian Land Information Authority  
SLIP 1180-2020-1

2020 aerial imagery supplied by  
Western Australian Land Information Authority  
(Scale 1:25,000; positional accuracy +/- 2m)

**DRAFT COPY ONLY**  
Department of Planning, Lands and Heritage  
working files, data not yet validated.  
Internal use only - not for distribution.

**Future of Fremantle Planning Committee Project Area**



Produced by Data Analytics,  
Department of Planning, Lands and Heritage,  
Copyright © June 2021

\\dopgisfiles\w02\Products\Perth\  
FutureOfFremantle\  
FutureOfFremantle\_A3L.mxd

Base information supplied by  
Western Australian Land Information Authority  
SLIP 1180-2020-1

2020 aerial imagery supplied by  
Western Australian Land Information Authority  
(Scale 1:25,000; positional accuracy +/- 2m)

**DRAFT COPY ONLY**  
Department of Planning, Lands and Heritage  
working plan; data not yet validated.  
Internal use only - not for distribution.

**Future of Fremantle Planning Committee Project Area**